


**Village of Delhi Parking Study**  
**PUBLIC HEARING**  
Village of Delhi, New York  
Sridhar Samudrala, Mayor

Presented at: Village Board Meeting  
Date: 12/1/2022  
gpinet.com

## 2023: Expenses Up / Revenue Down

### OLD NEWS

- 
1. Expenses increasing across the board
    - Fuel, maintenance, salaries, aging infrastructure
  2. Village tax base is small/shrinking
    - 78 % of properties are tax exempt (SUNY, County, Courts, Churches, etc...)
      - These entities do not pay taxes but occupy real estate and use our services
    - 22 % of properties (residents and businesses) pay for all expenses
    - County exacerbates this issue each time they purchase property within our Village
    - Village has partially relied on Federal/State aid

### NEW FOR 2023

1. Federal/State aid disappearing
  - Federal: \$150,000 (ARPA Funding not available 2023)
  - State: \$200,000 (SUNY AID to offset Public Safety expenses – Not available )

## Solutions to Deal with Lost Revenue?

1. Aid from State/Federal
  - *These entities are currently decreasing our financial aid*
2. Return properties to Tax roll
  - *Requires voluntary action from **County** or other major tax exempt property owners*
3. Raise Village taxes an additional 2% (to cover lost aid)
  - *This approach continues to punish our small tax base (**I do not like this**)*
4. Cut Village services
  - *Will negatively impact taxpayers and employees*
5. Introduce new sources of revenue
  - *Other communities adopted paid parking*
6. **The Village welcomes all proposed solutions**



## How New Revenue Will be Utilized

|                            |              |
|----------------------------|--------------|
| • Police Department        | 40 %         |
| • Streets Department       | 20 %         |
| • Water Department         | 20 %         |
| • Code Enforcement         | 5 %          |
| • Beautification Committee | 5 %          |
| • Fair in Square Committee | 5 %          |
| • Village Hall Expenses    | 5 %          |
| • <b>TOTAL</b>             | <b>100 %</b> |



## Parking Consultant Introduction

### ◀ **Michael Wieszchowski, PE, PTOE**

- ◀ Vice President & Director of Traffic Engineering w/GPI
- ◀ Professional Traffic Operations Engineer
- ◀ 30+ Years Experience in Transportation Engineering & Planning

### ◀ **Greenman-Pedersen, Inc. (GPI)**

- ◀ Providing professional consulting engineering and construction services, since 1966.
- ◀ Talented staff of 1,800+ people in 58+ offices throughout the U.S.
- ◀ Large, Diverse Company that specialized in Transportation Services.



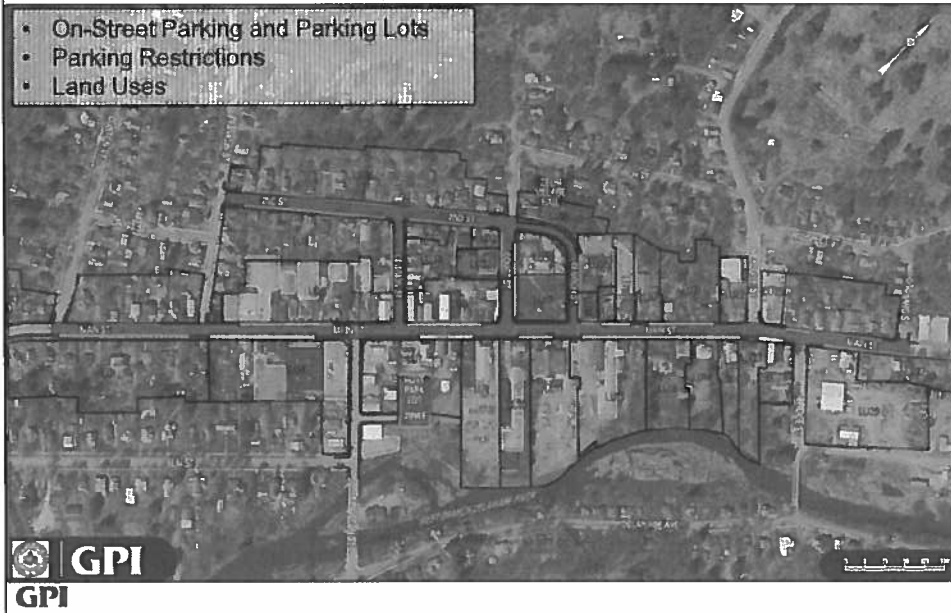
**GPI**

## Study Area



## Existing Conditions Inventory

- On-Street Parking and Parking Lots
- Parking Restrictions
- Land Uses



## Existing Conditions Inventory

### ◀ Parking Spaces

- ◀ 278 Public Spaces (On-Street and Hoyt Park Municipal Lot)
- ◀ 627 Private Spaces (Business-owned and Government-use Lots)
- ◀ Approximately 220 Additional Non-designated Private Spaces (Driveways, etc.)

Public Parking Zones

| ZONE           | STREET                          | FROM        | TO          | NO. OF STREET | NO. OF PARKING SPACES |
|----------------|---------------------------------|-------------|-------------|---------------|-----------------------|
| A              | MAIN ST                         | CLINTON ST  | FRANKLIN ST | W             | 7                     |
| B              | MAIN ST                         | CLINTON ST  | FRANKLIN ST | E             | 25                    |
| C              | MAIN ST                         | FRANKLIN ST | DIVISION ST | W             | 5                     |
| D              | MAIN ST                         | FRANKLIN ST | CLINTON ST  | E             | 23                    |
| E              | HOYT PARK MUNICIPAL PARKING LOT |             |             |               | 38                    |
| F              | MAIN ST                         | DIVISION ST | COURT ST    | W             | 11                    |
| G              | MAIN ST                         | KENYON ST   | COURT ST    | E             | 8                     |
| H              | MAIN ST                         | COURT ST    | CHURCH ST   | W             | 8                     |
| I              | MAIN ST                         | COURT ST    | CHURCH ST   | E             | 6                     |
| J              | MAIN ST                         | CHURCH ST   | MERCETH ST  | W             | 38                    |
| K              | MAIN ST                         | CHURCH ST   | BRIDGE ST   | E             | 33                    |
| L              | MAIN ST                         | MERCETH ST  | BRIDGE ST   | W             | 14                    |
| M              | MAIN ST                         | BRIDGE ST   | ORCHARD ST  | E             | 23                    |
| N              | ORCHARD ST                      | MAIN ST     | COURT ST    | W             | 23                    |
| O              | COURT ST                        | MAIN ST     | 2ND ST      | W             | 22                    |
| P              | COURT ST                        | MAIN ST     | 2ND ST      | E             | 36                    |
| Q              | 2ND ST                          | COURT ST    | DIVISION ST | W             | 53                    |
| R              | 2ND ST                          | COURT ST    | DIVISION ST | E             | 30                    |
| S              | DIVISION ST                     | MAIN ST     | 2ND ST      | E             | 33                    |
| T              | 2ND ST                          | DIVISION ST | FRANKLIN ST | W             | 17                    |
| U              | 3RD ST                          | DIVISION ST | FRANKLIN ST | E             | 88                    |
| <b>TOTAL =</b> |                                 |             |             |               | <b>278</b>            |

Business-owned and Government-use Parking Zones

| ZONE           | OWNER                | PARKING LOT TYPE  | ACCESSIBLE V/A | NO. OF PARKING SPACES |
|----------------|----------------------|-------------------|----------------|-----------------------|
| 1              | FAMILY DOLLAR        | COMMERCIAL/RETAIL | MAIN ST        | 48                    |
| 2              | STRICKLAND HOLLOW    | COMMERCIAL/RETAIL | MAIN ST        | 6                     |
| 3              | H. JOHNSON & BENDON  | COMMERCIAL/RETAIL | MAIN ST        | 29                    |
| 4              | COWEN LAW FIRM       | COMMERCIAL/RETAIL | MAIN ST        | 8                     |
| 5              | EIGHTY MAIN          | COMMERCIAL/RETAIL | MAIN ST        | 15                    |
| 6              | 4 DIVISION STREET    | COMMERCIAL/RETAIL | DIVISION ST    | 12                    |
| 7              | C-SEE SLATE          | COMMERCIAL/RETAIL | MAIN ST        | 33                    |
| 8              | TRACTOR SUPPLY CO.   | COMMERCIAL/RETAIL | MAIN ST        | 46                    |
| 9              | PARTS PLUS           | COMMERCIAL/RETAIL | KENYON ST      | 23                    |
| 10             | DELM TELEPHONE CO.   | COMMERCIAL/RETAIL | MAIN ST        | 15                    |
| 11             | O'NEILS SH-RE PUB    | COMMERCIAL/RETAIL | MAIN ST        | 18                    |
| 12             | MAG ARTWORKS FEDERAL | COMMERCIAL/RETAIL | MAIN ST        | 28                    |
| 13             | SHEPARD BEAVER       | COMMERCIAL/RETAIL | MAIN ST        | 28                    |
| 14             | UNITED MINISTRY      | RELIGIOUS         | CHURCH ST      | 29                    |
| 15             | VILLAGE HALL         | VILLAGE           | CHURCH ST      | 23                    |
| 16             | COUNTY SERVICES      | COUNTY            | MAIN ST        | 83                    |
| 17             | COUNTY OFFICES       | COUNTY            | MARK ST        | 183                   |
| 18             | COUNTY CLERKS OFFICE | COUNTY            | CHURCH ST      | 36                    |
| 19             | DELM POST OFFICE     | FEDERAL           | COURT ST       | 15                    |
| <b>TOTAL =</b> |                      |                   |                | <b>627</b>            |



## Parking Occupancy Review

- ◀ Public Area Parking Occupancy Counts
  - ◀ Counted Bi-hourly
  - ◀ Counted Summertime on both a Wednesday and a Thursday
  - ◀ Average Daily Public Parking Utilization was 34%
  - ◀ Short-Term Peaks as High as 61% Overall
- ◀ Business-owned and Government-use Lots
  - ◀ Only Reviewed General Daily Occupancy
  - ◀ Business-Owned Lots Typically had Lower Utilization (30%)
  - ◀ Government (County/Village) Lots Typically much higher (70%)
- ◀ Illegal Parking Noted
  - ◀ Parking in "No Parking Zones"
  - ◀ Parking for Extended Periods



**GPI**

## Parking Occupancy Review





## Review of Other Municipal Parking Systems

- ◀ Pay Parking Generally 8 AM to 6 PM, Mon – Fri or Sat
- ◀ Average Parking Rate is about \$1.00 (tourist areas higher)
- ◀ Methods Vary from Meters to Kiosks/Mobile Apps
- ◀ Violations: \$15 - \$30, Some Escalate for Repeat Offenders

Municipal Pay Parking System Comparison

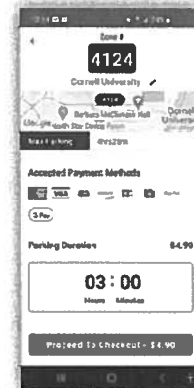
| MUNICIPALITY           | HRS OF ENFORCEMENT |          | AVG. COST (PER HR) | DAYS OF WEEK ENFORCED             | PARKING METER HARDWARE | MOBILE PARKING APP. |
|------------------------|--------------------|----------|--------------------|-----------------------------------|------------------------|---------------------|
|                        | AM START           | PM END   |                    |                                   |                        |                     |
| Village of Saugerties  | 9:00 AM            | 5:00 PM  | \$0.50             | Monday - Saturday (Free Holidays) | Coin Meters            | -                   |
| City of Poughkeepsie   | 8:00 AM            | 6:00 PM  | \$1.00             | Monday - Friday (Free Holidays)   | Kiosks                 | -                   |
| Town of Middleburgh    | 8:00 AM            | 6:00 PM  | \$0.13             | Monday - Saturday (Free Holidays) | Coin Meters            | -                   |
| Village of Cooperstown | 9:00 AM            | 6:00 PM  | \$2.00             | Monday - Sunday (Seasonal)        | Kiosks                 | Passport            |
| Village of Lake George | 8:00 AM            | 12:00 AM | \$2.00             | Monday - Sunday (Seasonal)        | Kiosks                 | ParkMobile          |
| City of Ithaca         | 9:00 AM            | 6:00 PM  | \$1.50             | Monday - Friday (Free Holidays)   | Kiosks                 | ParkMobile          |
| City of Kingston       | 9:00 AM            | 6:00 PM  | \$1.00             | Monday - Saturday (Free Holidays) | Coin Meters / Kiosks   | Flowbird            |
| City of Hudson         | 9:00 AM            | 5:00 PM  | \$0.50             | Monday - Saturday (Free Holidays) | Coin Meters            | -                   |
| Village of Gereseo     | 8:00 AM            | 5:00 PM  | \$0.25             | Monday - Friday (Free Holidays)   | Coin Meters            | -                   |
| Village of Lake Placid | 9:00 AM            | 6:00 PM  | \$2.00             | Monday - Saturday (Free Holidays) | Kiosks                 | Flowbird            |
| Village of Alfred      | 7:00 AM            | 5:00 PM  | \$1.25             | Monday - Friday (Free Holidays)   | -                      | ParkMobile          |



Note: customers also pay an added convenience fee that will go directly to the App provider.

## Pay Parking System Options

- ◀ Parking Meters at Each Space
  - ◀ Significantly More Maintenance Time for Coin Collection, and lost revenue from "Piggybacking"
- ◀ Parking Kiosks Only (Pay by Display)
  - ◀ Not as accessible for handicapped
- ◀ Parking Kiosks/Mobile App (Pay by Plate)
  - ◀ More convenient, but Mobile App fees
- ◀ Parking Permits
  - ◀ Cuts costs for residents & local business owners



## Parking System Recommendations

- ◀ Pay by Plate System with Parking Kiosks and Mobile App Use (Parkmobile App).
- ◀ Pay Parking in Effect 8:00AM - 6:00 PM, Mon-Sat, Excluding Holidays.
- ◀ \$1.00 per Hour Parking Fee
- ◀ \$25 Parking Ticket for Violations
- ◀ Availability of Residential Parking Permit (\$120 Annually)
- ◀ Stricter Enforcement of existing No-Parking Zones
- ◀ Private-Use Signage on All Business-owned and Government-Use Lots to deter Public Parking in Private Lots



**GPI**

## Pay System Costs & Revenue

- ◀ Construction/Implementation Costs \$325,000
  - ◀ Annualized cost over 10-year design life \$32,500/Year
- ◀ Annual Revenue
  - ◀ Parking Fees \$255,000 - \$260,000/Year
  - ◀ Violation Enforcement \$30,000 - \$35,000/Year
- ◀ Annual Costs
  - ◀ Operational Expenses & Fees \$55,000 - \$60,000/Year
  - ◀ Doesn't Include Enforcement Costs (Absorbed by the Police)

Overall, a Pay Parking System Should Generate an Annual Net Revenue of Approximately \$200,000

**GPI**



## Questions

**Michael Wieszchowski, P.E., PTOE**

(518) 898-9554

[mwieszchowski@gpinet.com](mailto:mwieszchowski@gpinet.com)

**GPI**

**Many Talents One Firm**

[gpinet.com](http://gpinet.com)

